

# TENANT FASCIA SIGNS – BUILDINGS C&D

## TYPE OF SIGN

Individually lighted aluminum channel letters with Plexiglas fronts.

## LETTER STYLE

Per Tenant discretion with Landlord and City approval, subject to signage design conforming to building architecture and the intent of this criteria.

## NUMBER OF SIGNS

One sign Maximum for each store. For corner oriented stores with towers in buildings "C" and "D", the signage allowed under these provisions may supplement additional permitted tower signage.

## SIZE AND LOCATION

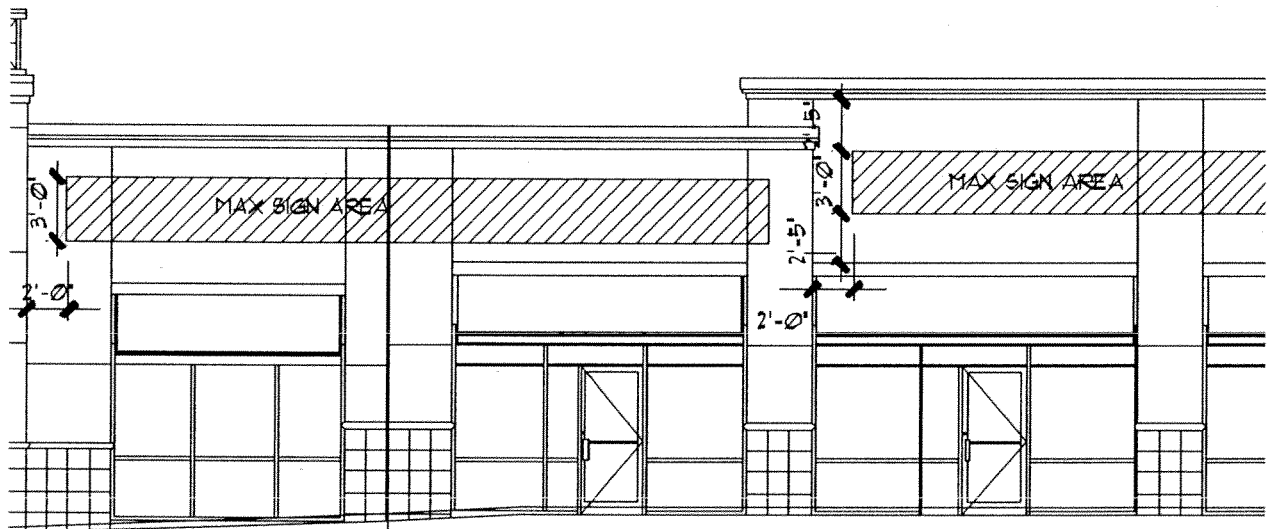
Maximum copy height: 3'-0"  
Minimum copy height: 1'-2"  
Maximum copy length: No more than 80% of the length of store frontage, exclusive of areas with tower features. Each sign shall be centered on store frontage and mounted within the designated signage area shown on attached details.

## TYPEFACE AND COLORS

Typefaces, logos, and colors are subject to landlord and City approval.  
Neon shall be 6500 white.  
Bronze colored trim cap and sides.

## INSTALLATION

Final electrical hookup shall be performed by a licensed electrician. Shop drawings shall be submitted to the Landlord for approval. All penetrations through masonry shall be through the mortar joints. All signage installation shall be in accordance with City of Covina Codes and Ordinances, and the National Electrical Code. Transformer to be located in soffit plenum, J box and conduit to panel by landlord, wiring by tenant. Plenum accessible through access panels in wall above storefront.



TENANT FACIA SIGNS  
BUILDING D