

CITY OF COVINA  
 PLANNING DIVISION  
 CITY PLANNER APPROVED  
 Case File *8-2-22-2*  
 NOV 14 2022  
 By: *[Signature]*  
 Any changes or alterations to the approved plans will require review and approval from the Planning Division

12'-10 1/4"  
 1'-6"  
 12/11/16  
 Click & Collect  
 online order pick-up  
 18'-5 3/4"  
 67.9 SQ. FT.  
 LED ILLUMINATED CHANNEL LETTERS  
 FACES - WHITE LEXAN  
 RETURNS - 040 IKEA WHITE RETURNS  
 BACKS - 3MM ACM  
 ILLUMINATION - GE WHITE LEDS  
 REMOTE POWER SUPPLIES

CITY PLAN  
 CITY PLA  
 Case File  
 NO  
 By: *[Signature]*  
 Any changes o  
 plans will requi  
 the

**id** ID ASSOCIATES  
 12771 INDUSTRIAL ROAD DOTHAN, ALABAMA, 36033  
 PH (888) 343-5554 - FAX (205) 896-4401  
 www.idassociates.com

**IKEA**  
 COVINA, CA  
 DEVEN HARMONOS  
 IKEA-COVINA CA #413-NEW SIGN EXHIBIT

THIS DRAWING IS FOR CONCEPTUAL PURPOSES ONLY. DUE TO CONSTRUCTION CONSTRAINTS, SIZES AND OR LOCATIONS MAY CHANGE SLIGHTLY.

NO.	DATE	DESCRIPTION	BY	CHKD	APP'D
1	12/10/21	JAS			

**UL** Underwriters Laboratories Inc.

*Self-Inspection  
 Marked correct*

12'-9 11/16"

Click & Collect  
online order pick-up

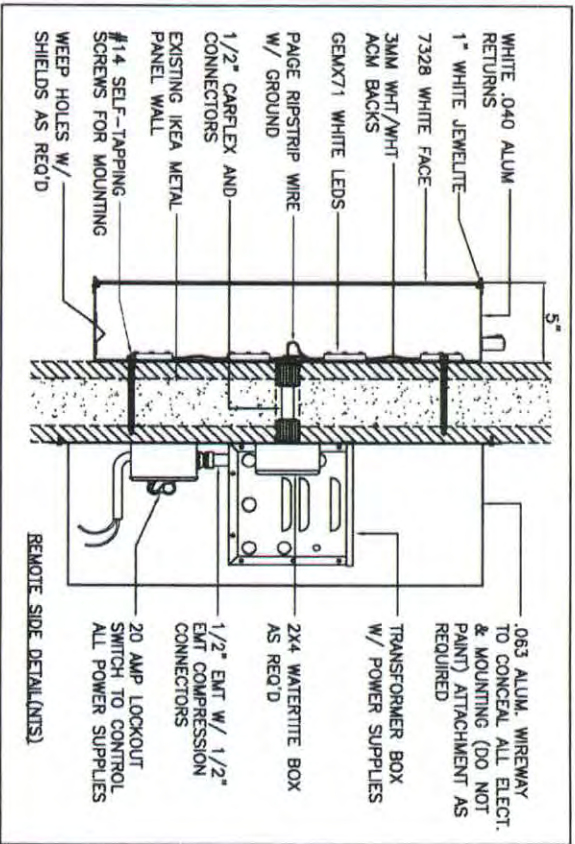
18'-5 11/16"

CHANNEL LETTERS REMOTE MOUNTED:  
RETURNS - .040 WHITE ALUMINUM 5" DEEP  
TRIM - 1" WHITE JEWELITE  
LETTER BACKS - 3MM WHT/WHT ACM BACKS  
LETTER FACES - 7328 WHITE LEXAN  
ILLUMINATION - GEMX71 WHITE LEDS

WEEP HOLES & COVERS AS REQUIRED.  
SILICONE SEAL AROUND INSIDE OF LETTER  
CAN TO PREVENT WATER LEAKAGE.  
ALL HARDWARE TO BE NON-CORROSIVE

CITY OF COVINA  
PLANNING DIVISION  
CITY PLANNER APPROVED  
Case File *SP-22-3*  
NOV 14 2022  
By *[Signature]*  
Any changes or alterations to the approved  
plans will require review and approval from  
the Planning Division

**A** INTERNALLY-ILLUMINATED CHANNEL LETTERS (NTS)



**id** ID ASSOCIATES  
1771 INDUSTRIAL ROAD, DOTHAN, ALABAMA 36020  
PH (334) 363-5500 FAX (334) 363-7401  
www.idassociates.com

**IKEMA**  
COVINA, CA  
DEVEN HAMMONDS  
IKEMA-COVINA CA #143 NEW SIGN EXHIBIT

NO.	REV.	DATE	BY	DESCRIPTION
1	0	12/10/21	JAS	

THIS DRAWING IS FOR CONCEPTUAL PURPOSES ONLY. DO NOT CONSIDER FOR CONSTRUCTION. DIMENSIONS, SIZES AND MATERIALS MAY CHANGE WITHOUT NOTICE.

**id** ID ASSOCIATES Inc.

*DRP OSMA-CLASSY7  
under review*

PHOTOCELL AS REQ'D

L1 7 MOOS  
L2 4 MOOS  
L3 4 MOOS  
L4 5 MOOS  
L5 8 MOOS  
L6 11 MOOS  
L7 7 MOOS  
L8 4 MOOS  
L9 8 MOOS  
L10 4 MOOS  
L11 5 MOOS  
L12 5 MOOS  
L13 9 MOOS

# Click & Collect

# online order pick-up

L1 - L13  
(79) MOOS  
(1) POWER SUPPLY  
L14 - L31  
(112) MOOS  
(1) POWER SUPPLY

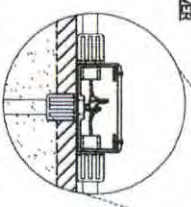
ILLUMINATION:  
-(181) MOOS OF WHITE TETRA-MAX GEAR71  
-(2) GEP512-60L-NA MULTI-TAP P.S.  
-(0.65 AMPS EX.)  
-1.3 TOTAL AMPS MAX  
-1 CIRCUIT (20 AMP)

L14 7 MOOS  
L15 4 MOOS  
L16 4 MOOS  
L17 7 MOOS  
L18 4 MOOS  
L19 8 MOOS  
L20 4 MOOS  
L21 9 MOOS  
L22 4 MOOS  
L23 8 MOOS  
L24 4 MOOS  
L25 9 MOOS  
L26 4 MOOS  
L27 8 MOOS  
L28 1 MOOS  
L29 7 MOOS  
L30 9 MOOS  
L31 9 MOOS

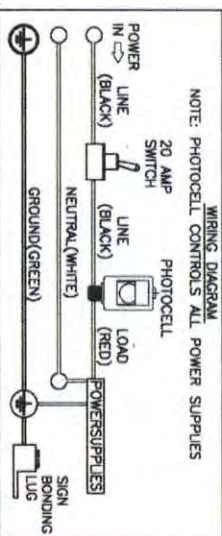
CITY OF COVINA  
PLANNING DIVISION  
CITY PLANNER APPROVED  
Case File **SPR-2222**  
NOV 14 2022

By: *[Signature]*  
Any changes or alterations to the approved plans will require review and approval from the Planning Division

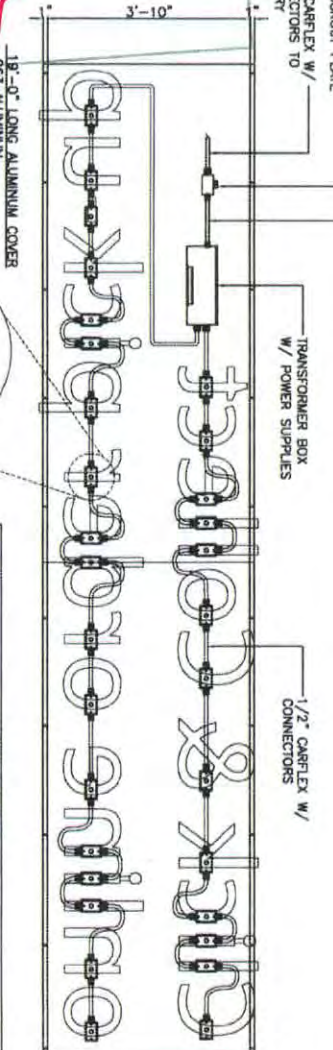
18"-0" LONG ALUMINUM COVER  
-063 ALUMINUM  
-1" HEN FOR MOUNTING



WIRING DETAIL (TOP VIEW)  
SECONDARY WIRING FROM LETTERS TO TRANSFORMER BOX IN EACH WATERFITE BOX BY SIGN INSTALLER



WIRING DIAGRAM  
NOTE: PHOTOCELL CONTROLS ALL POWER SUPPLIES



COVER SIDE VIEW

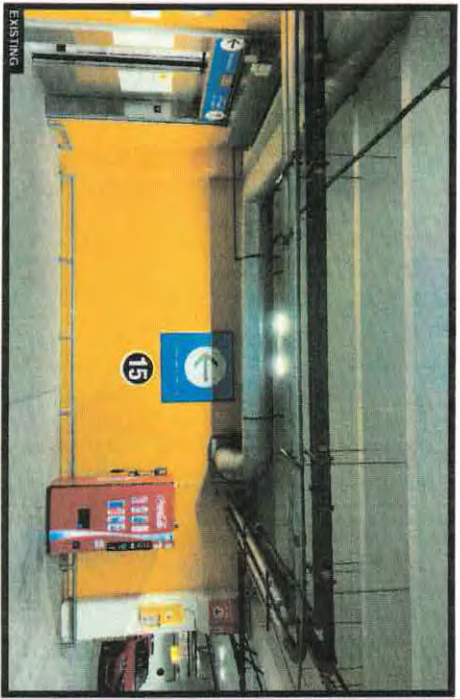
## INTERNALLY-ILLUMINATED CHANNEL LETTERS (NTS)

1771 INDUSTRIAL ROAD, DOTHAN, ALABAMA, 36303 PH: (888) 303-5336 FAX: (256) 858-1401 WWW.IDASSOCIATES.COM		COVINA, CA DEVEN HANNONDS MEA-COVINA CA #11-JANUW SIGN EXHIBIT	
DATE	BY	DATE	BY
12/18/21	JAS		

THIS DRAWING IS FOR CONCEPTUAL PURPOSES ONLY. ONE (1) IS CONSTRUCTION DOCUMENTS. STATES LAW OR CANNOTS MAY CHANGE SUBJECT.

*[Handwritten signature]*  
DEPT OF PLANNING  
CITY OF COVINA

CO  
DNV  
RAF  
SP  
1 20  
IONS 11  
w and  
3 Divis



NOTE: EXISTING WALL PAINTED IKEA BLUE BY OTHERS.

CITY OF COVINA  
 PLANNING DIVISION  
 CITY PLANNER APPROVED  
 Case File *SP-R-22-2*

NOV 14 2022

By: *[Signature]*

Any changes or alterations to the approved plans will require review and approval from the Planning Division



- B LED ILLUMINATED CHANNEL LETTERS ON RACEWAY** 21.72 SQ. FT.
- FACES - WHITE LEXAN / ARROW IS BLACK VINYL
- RETURNS - 040 IKEA WHITE RETURNS
- BACKS - 3MM ACM
- ILLUMINATION - GE WHITE LEDS
- RACEWAY - PAINTED TO MATCH NCS 4550-R808 IKEA BLUE
- FONT - NOTO KEA LATH

**ID ASSOCIATES**  
 1771 INDUSTRIAL ROAD - DOTHAN, ALABAMA 36303  
 PH (888) 202-5534 - FAX (334) 788-1403  
 WWW.IDASSOCIATES.COM

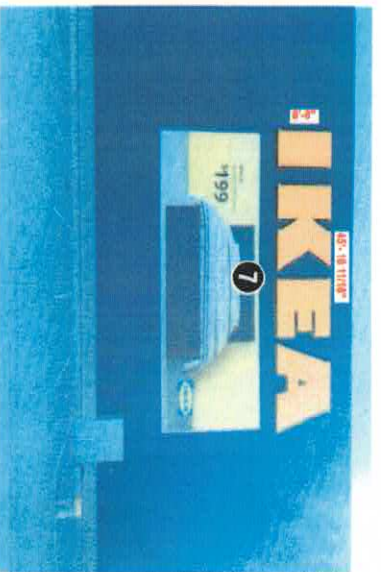
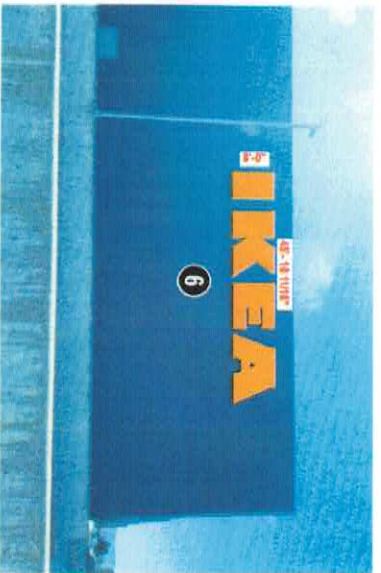
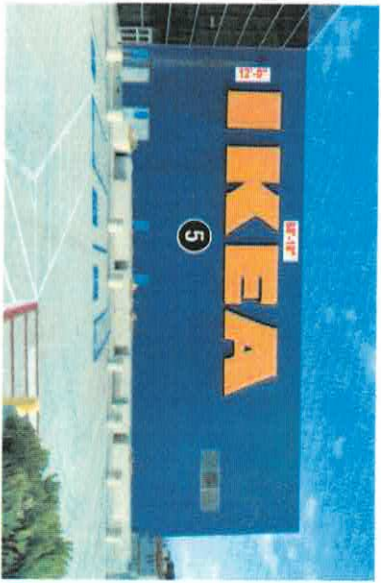
DATE	DESCRIPTION	BY	APP'D
12/19/21	CONVINA, CA	JAS	
	DEVEN HALLMONOS		
	KEA-COVINA CA #413-NEW SIGN EXHIBIT		

THIS DRAWING IS THE CONCEPTUAL PURPOSE ONLY. ONE TO BE USED FOR CONSTRUCTION CONTRACTORS. SIZES AND DIMENSIONS MAY CHANGE SLIGHTLY.

**Hydrotech Inc.**

*[Handwritten signature]*  
 Get observations  
 must happen





**IA** ID. ASSOCIATES  
 1771 INDUSTRIAL ROAD, NORTH ALABAMA, 36303  
 PH: (800) 352-5247 FAX: (256) 358-1401  
 www.idassociates.com

PROJECT	CLIENT	DATE
COVINA, CA	IKEA	12/19/21
DEVEN HAMMONDS		JAS
IKEA-COVINA CA #113-NESH SIGN EXHIBIT		

THIS DRAWING IS FOR CONCEPTUAL PURPOSES ONLY. ONE TO CONSULT WITH ARCHITECTS, ENGINEERS, AND OTHERS FOR ANY CHANGE, SUBSTITUTIONS, AND/OR REVISIONS.

DATE	BY	APP'D
NOV 14 2022	[Signature]	[Signature]

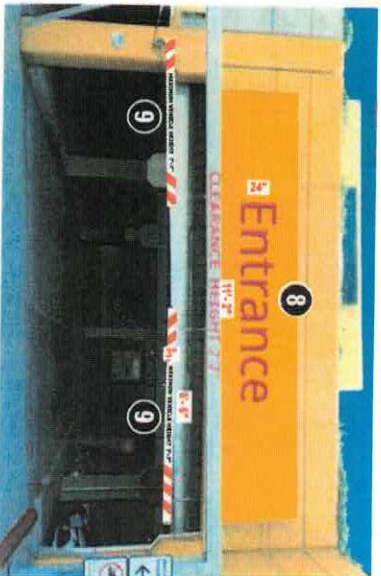
CITY OF COVINA  
 PLANNING DIVISION  
 CITY PLANNER APPROVED  
 Case File: **SP222**

NOV 14 2022  
 [Signature]  
 City Planner

By: [Signature]  
 Any changes or alterations to the approved plans will require review and approval from the Planning Division

[Signature]  
 Deven Hammonds  
 Project Manager

1-01  
 word  
 form



CITY OF COVINA  
 PLANNING DIVISION  
 CITY PLANNER APPROVED  
 Case File SP-R-22

NOV 14 2022

**id ASSOCIATES**  
 Any of our offices  
 12711 DUNDAS RD, DOWNS, ALABAMA 36626  
 PH: (888) 323-5334 / FAX: (205) 938-1461  
 www.idassociates.com

THIS DRAWING IS FOR CONCEPTUAL PURPOSES ONLY. DO NOT CONSIDER FOR CONSTRUCTION CONTRACTS, SIZES AND OR LOCATIONS MAY CHANGE SIGNIFICANTLY.

NO.	DATE	BY	CHKD	APP'D	REV	DESCRIPTION
1	12/10/21	JAS				

**id** Interiors Inc.  
 Page 8 of 8

*DATE SUBMITTED BY  
 JAS*