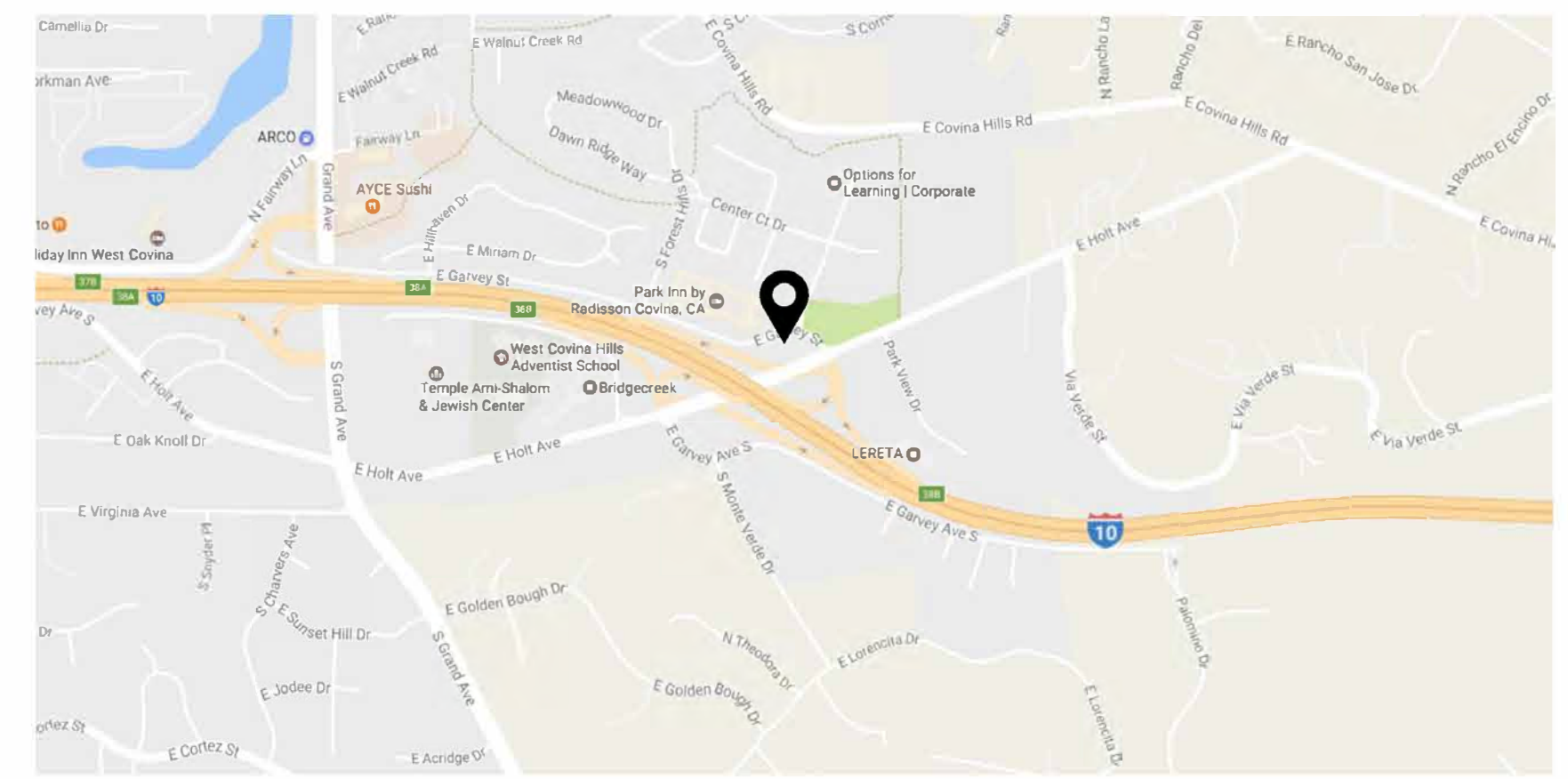
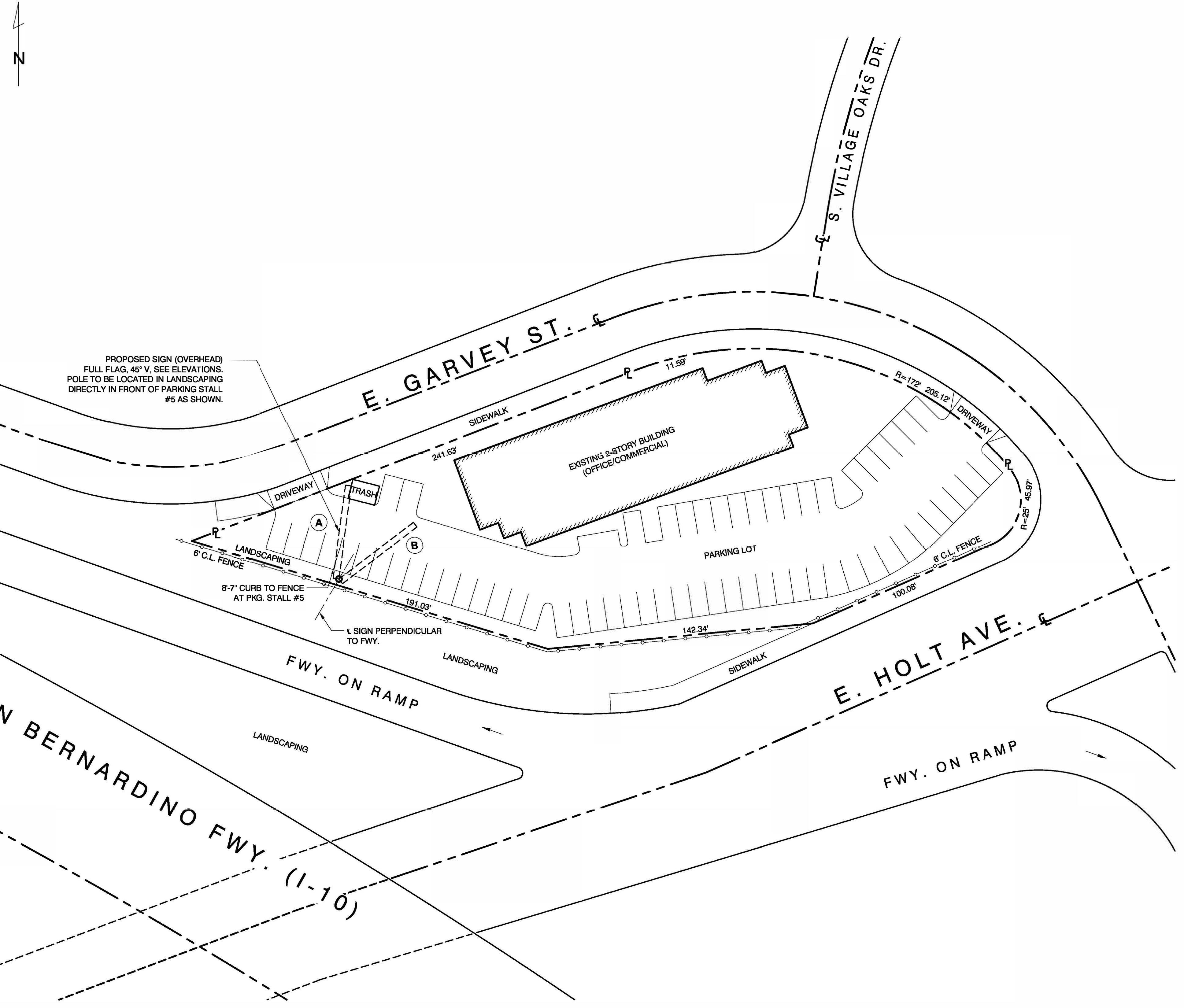


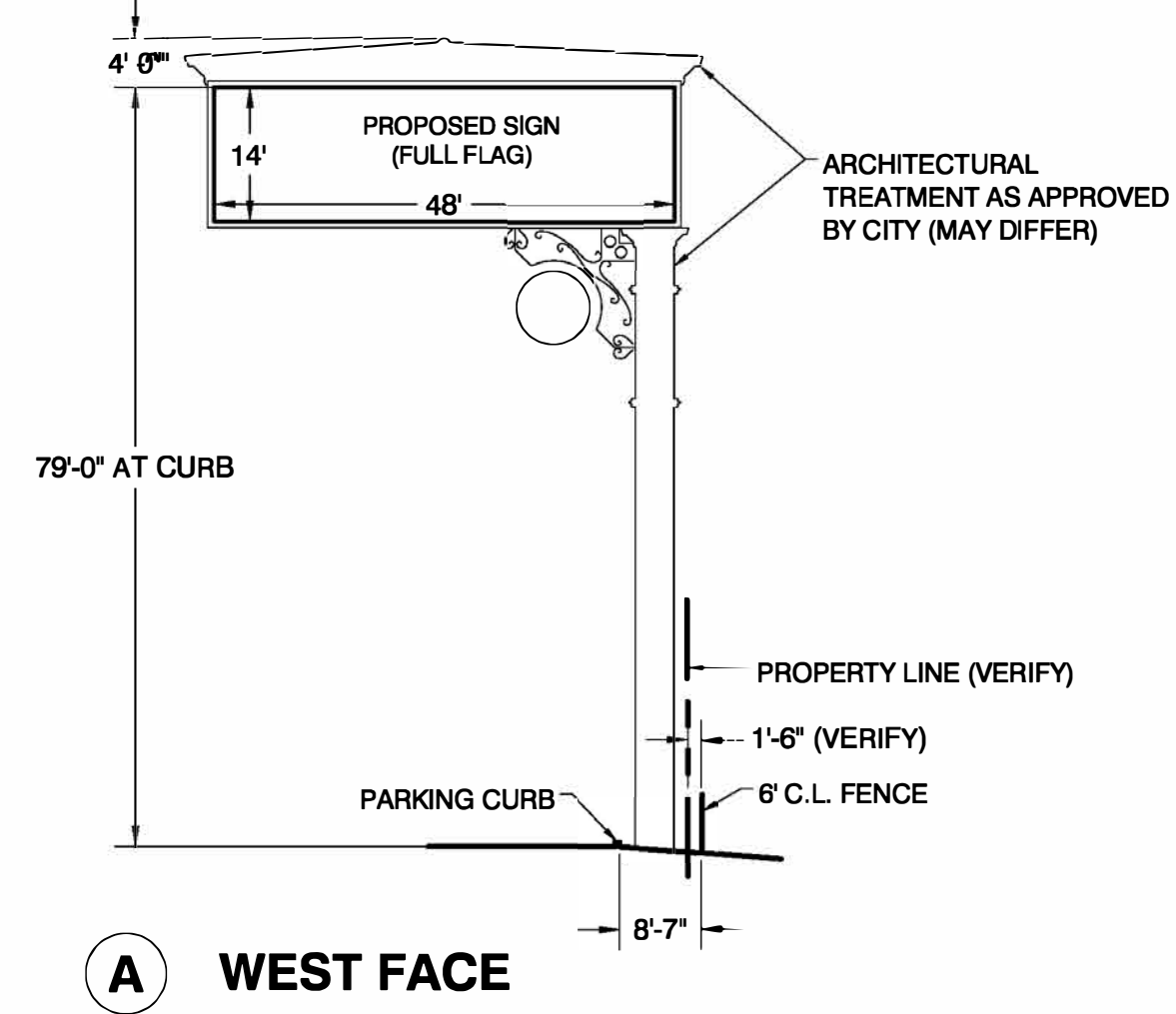
**Vicinity Map:
Not to Scale**



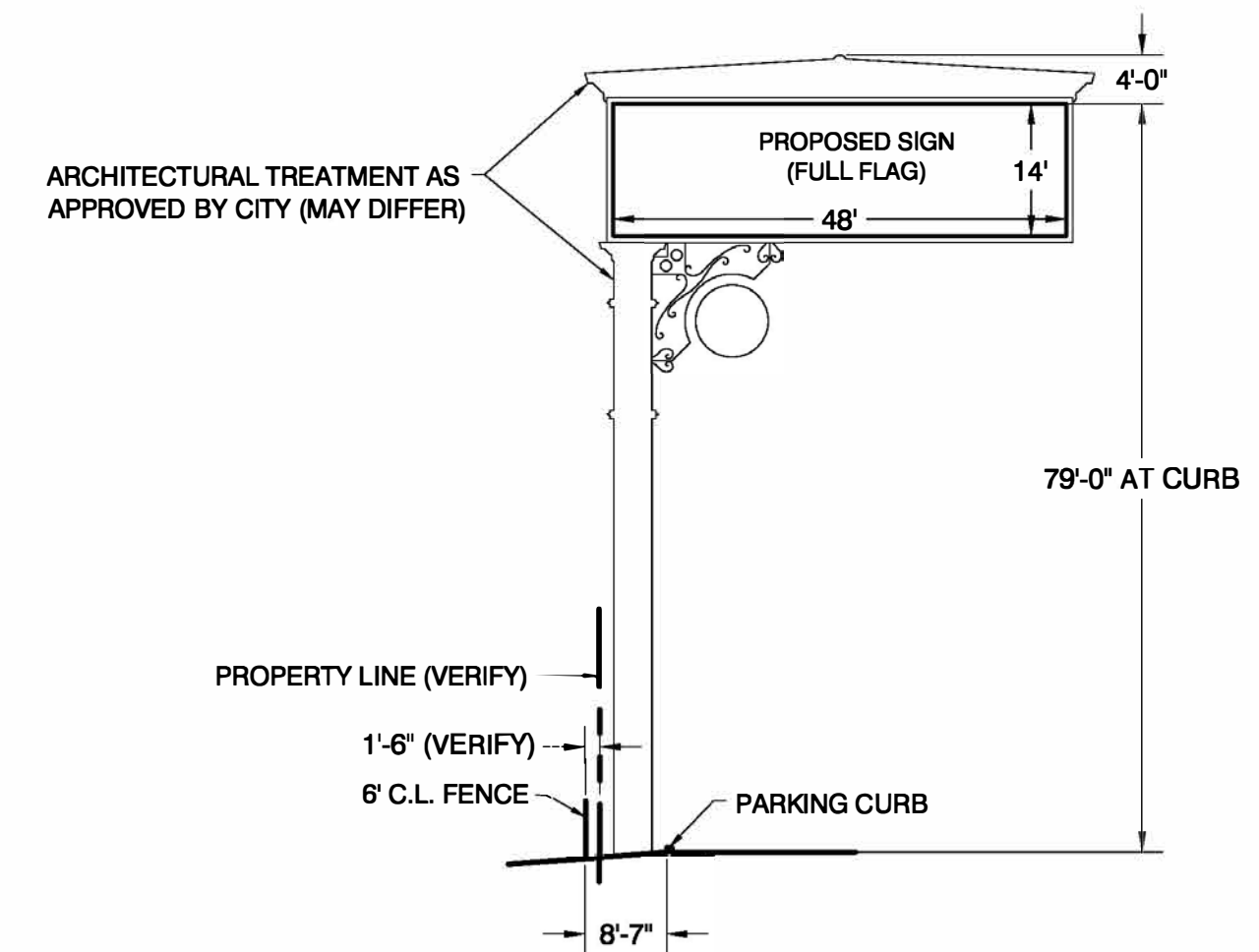
**Site Plan:
1" = 30'**





**Proposed Elevations:
1" = 20'**



A WEST FACE



B EAST FACE

| Project | Electrical | Proprietary Print & Design | Engineer | Contractor | Applicant | Date | 04-20-17 | Drawn By | PH |
|---|--|---|--|---|---|--------------------|----------|--------------------|-----------------------------|
| Address: 1270 E. Garvey St. Covina, CA 91724 APN#: 8447-31-52 | Proposed Electrical Load Schedule Drawings: A 2" schedule 80 sweep into 2" schedule 40 coming from existing panel that goes into a 2" schedule 80 sweep up the billboard column to a 200amp panel. The billboard requires single-phase 120/240. | This print and design concept is the property of Bulletin Displays, LLC. Copyrighted 2016 by Bulletin Displays, LLC. This is the unpublished drawing created by Bulletin Displays, LLC. Any other use of this reproduction is prohibited without the written authorization from Bulletin Displays, LLC. | RMG Outdoor, Inc. 4425 North 24th St., Ste 200 Phoenix, AZ 85016 (602) 230-8634 * Fax (602) 230-9071 Engineer - John Weaver jweaver@rmg-online.com |  CONTRACTOR Lic. #204958 3127 E. South Street, Suite B Long Beach, CA 90805 Phone (562) 470-6890 Fax (562) 470-6896 |  OWNER BULLETIN DISPLAYS, LLC "CREATIVE OUTDOOR ADVERTISING" 3127 E. South Street, Suite B Long Beach, CA 90805 Phone (310) BULLETIN (562) 470-6680 Fax (562) 470-6686 | Revisions | 10-19-17 | Approved By | VG |
| The configuration will be a 14' x 48' two-sided back-to-back digital billboard and the height of 79'-0" from below the sign. Column position may vary slightly due to unknown underground utilities. Lease Area: The space below the sign and the access to it and any area needed. | | | | | | Sheet No. | | Scale | As Noted (24"x36" sheet) |
| | | | | | | Drawing No. | | | |