

SIGN CRITERIA

“CITRUS PLAZA”

THE FOLLOWING SIGN CRITERIA HAVE BEEN ESTABLISHED FOR THE PURPOSE OF ASSURING A PREMIER SHOPPING CENTER, AND FOR THE MUTUAL BENEFIT OF ALL OCCUPANTS. CONFORMITY WITH THE CRITERIA SHALL BE STRICTLY ENFORCED AND ANY INSTALLED NON-CONFORMING SIGNS SHALL BE BROUGHT INTO CONFORMITY AT THE EXPENSE OF THE APPLICABLE TENANT.

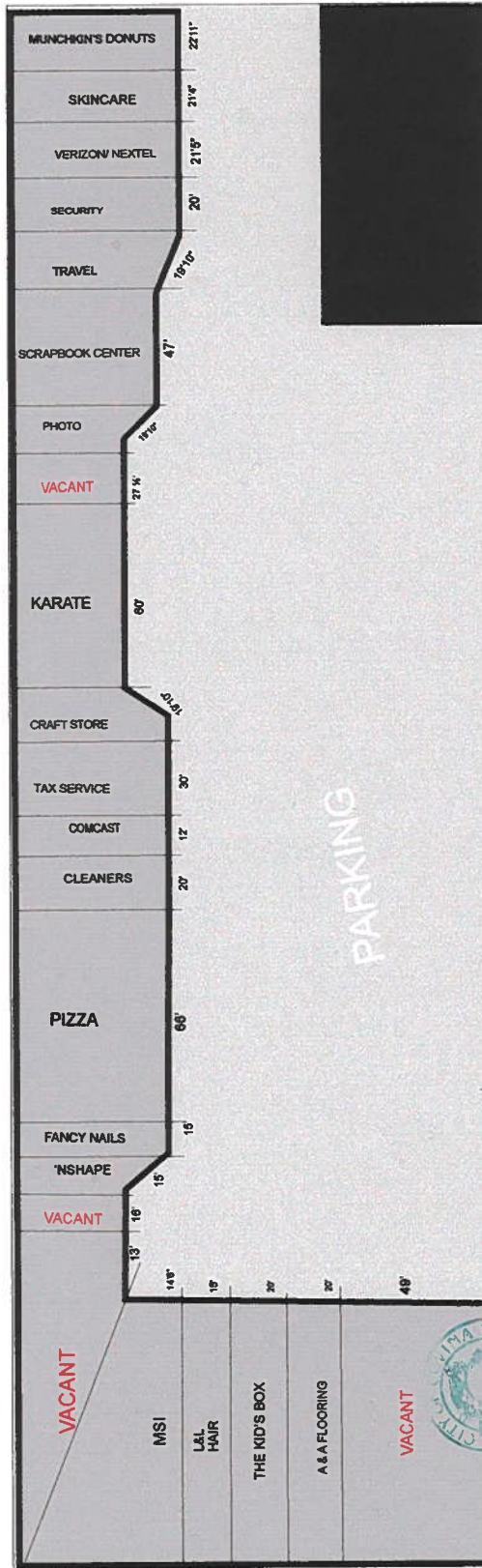
THE CRITERIA HAVE BEEN DESIGNED TO GIVE EACH TENANT FLEXIBILITY IN PERSONALIZING ITS OWN STORES AND AT THE SAME TIME ALLOW MAXIMUM CREATIVITY IN SIGN DESIGN.

GENERAL REQUIREMENTS

- A. PRIOR TO THE FABRICATION OF ANY SIGN TENANT SHALL SUBMIT TO LANDLORD FOR APPROVAL DETAILED DRAWINGS DEPICTING THE DESIGN, GRAPHICS, LETTER STYLE, COLOR, SIZE AND LOCATION OF TENANT SIGN.
- B. TENANT AGREES TO FULFILL ALL REQUIREMENTS OF THE “CITRUS PLAZA” SIGN CRITERIA AS SET FORTH HEREIN.
- C. ALL TENANT SIGNS SHALL BE CONSTRUCTED AT THE EXPENSE OF THE TENANT.
- D. ALL SIGNAGE SHALL BE COMPATIBLE WITH THE BUILDING AND SITE DESIGN RELEVANT TO COLOR, MATERIALS AND PLACEMENT.
- E. ALL SIGNS SHALL BE CONSTRUCTED OF HIGH QUALITY MATERIALS.
- F. ALL SIGN COPY (PORTION DEVOTED TO WORDS, SYMBOLS, ETC.) MUST NOT EXCEED 40% OF SIGN CABINET.
- G. IN ADDITION, EACH SIGN MAY CONTAIN A LOGO, WHICH MUST BE WITHIN THE LIMITS PRESCRIBED FOR THE SIGN.
- H. PAINTED LETTERING WILL NOT BE PERMITTED.

"Citrus Plaza"

CYPRESS ST.



CITRUS AVE.



PLOT PLAN // NTS

APPROVED

J. Williams

Dec. 2, 2003

902-962 N. Citrus Ave

CITY OF COVINA
PLANNING DEPARTMENT

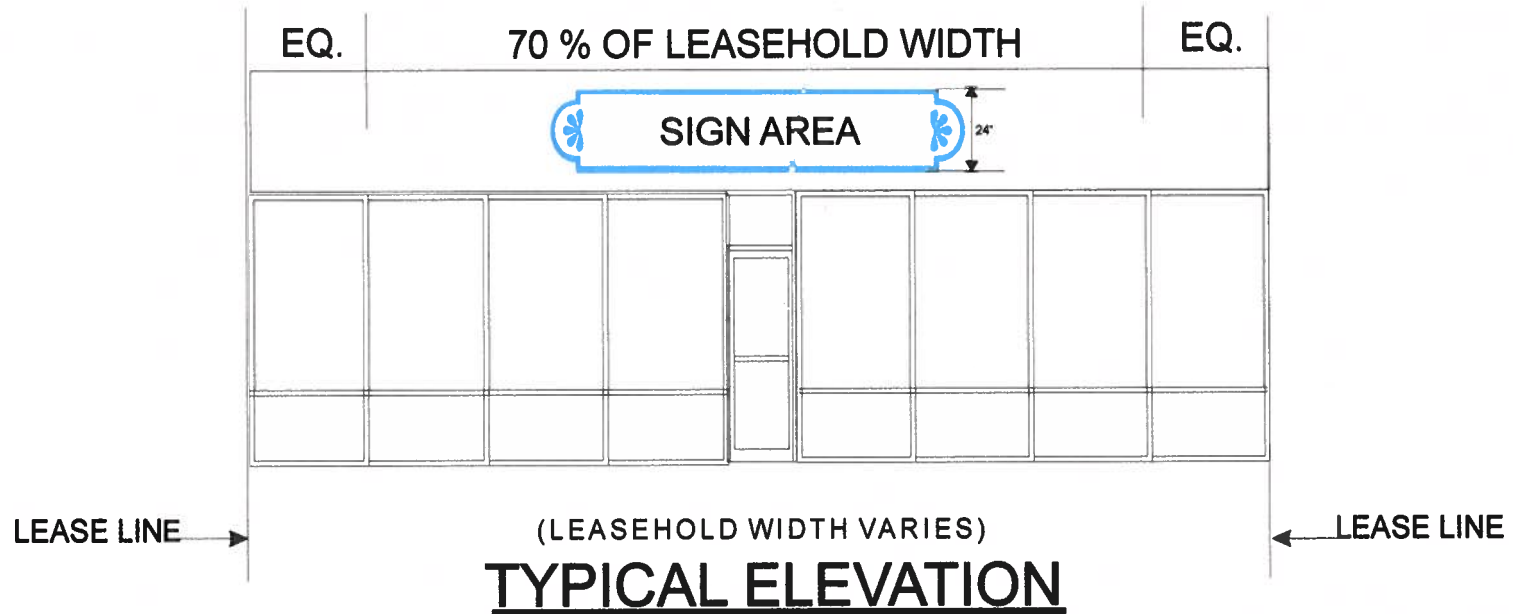
CIS BOX SIGNS SEE ATTACHED TYPICAL SIGNAGE

1540 W SAN BERNARDINO RD.
COVINA, CA. 91723
(626)915-5694
FAX (626)915-7147
EMAIL-ACADEMYSIGNS1@CS.COM

JOB: Citrus Plaza

DRAWN BY: *Blane*
NO REPRODUCTION WITHOUT WRITTEN PERMISSION

Academy Signs



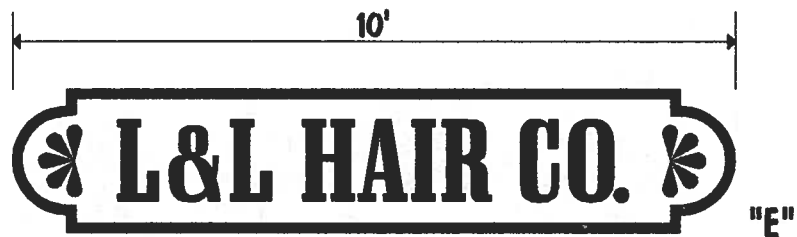
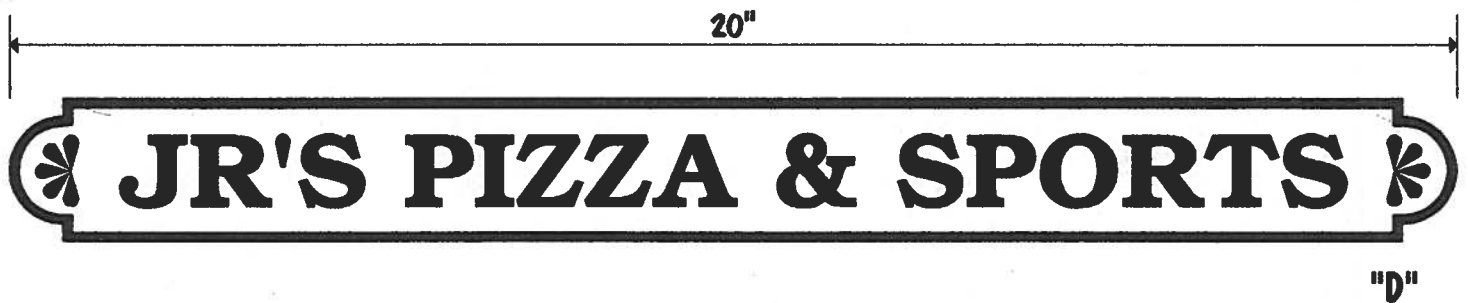
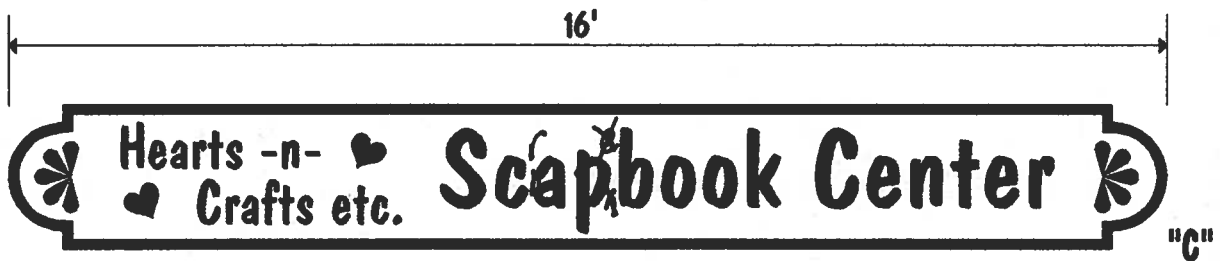
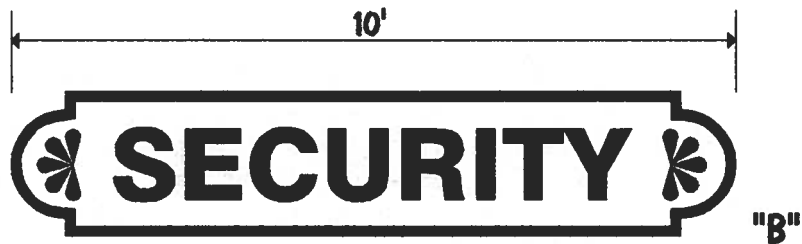
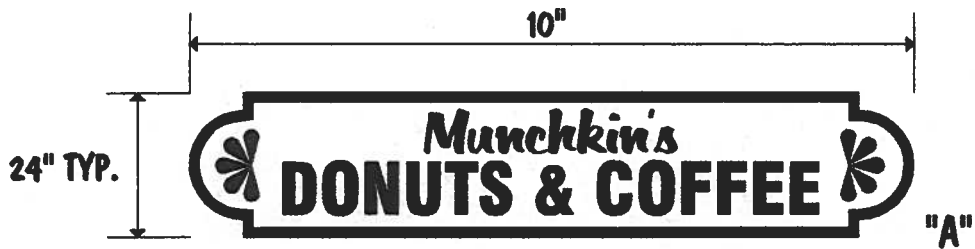
SIGN SHALL NOT EXCEED 70% OF LEASEHOLD WIDTH
SIGN COPY SHALL NOT EXCEED 40% OF SIGN FACE

Academy Signs

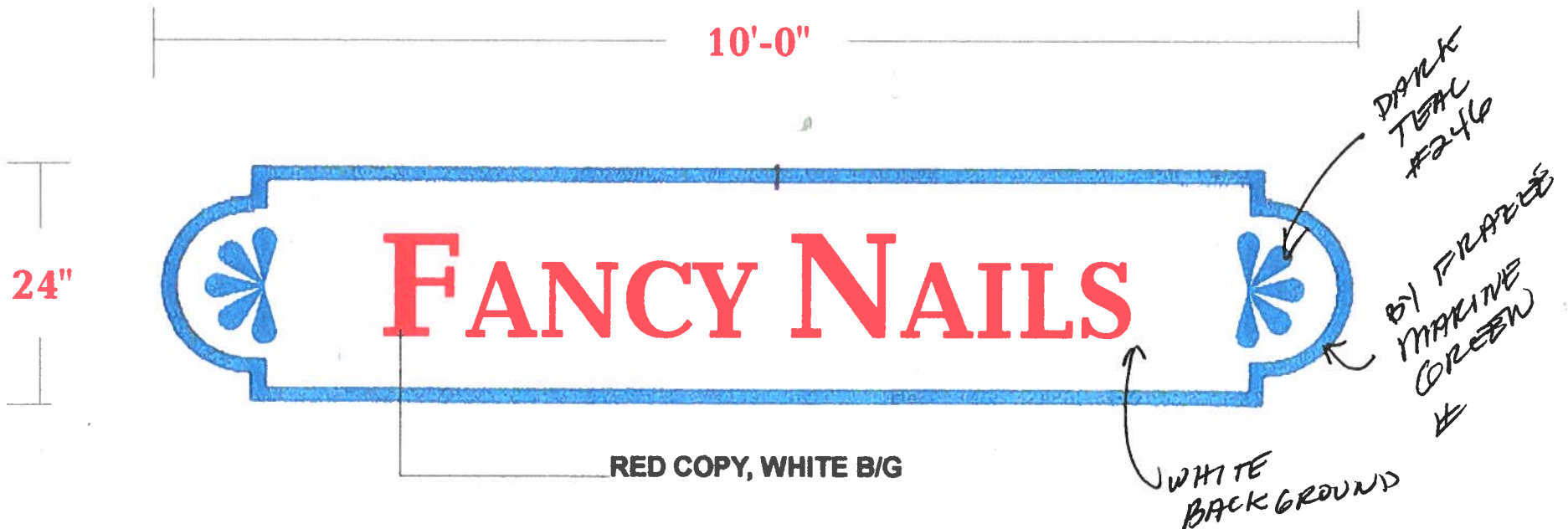
1540 W. SAN BERNARDINO RD.
COVINA, CA. 91723
(626)915-5694
FAX (626)915-7147
EMAIL-ACADEMYSIGNS1@CS.COM

JOB: Citrus Plaza

DRAWN BY: Gina SCALE: 7-9-03
NO REPRODUCTION WITHOUT WRITTEN PERMISSION



TYPICAL INT. ILLUM. WALL SIGNS / 3/8"=1'- 0"



- S/F WALL SIGN / 3/4"=1'0"
- 40% OF SIGN = 8 SQ. FT.
- SIGN AREA AS SHOWN=6.3 SQ. FT.

Doc Pass

Academy Signs
11-08-02